

Scaled data based on original data using  
LM-79-08 Approved Method: Electrical and Photometric Measurements of Solid-  
State Lighting Products

Test Report Prepared for  
Cooper Lighting Solutions  
(formerly Eaton)

Brand: INVUE

Report Number: P149378

Luminaire Tested: **VWM-E04-LED-E1-SL2-HSS-8030**

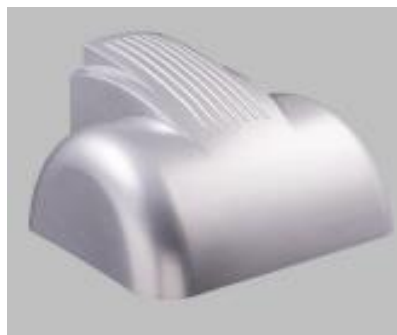
Issue Date: 03/03/2020

**Test Information**

Test Method: LM-79-08  
Report Number: P149378  
REPORT IS SCALED FROM IESNA LM-79-08 TEST DATA (P33726)  
Test Lab: INNOVATION CENTER-P3  
Issue Date: 03/03/2020  
Manufacturer: COOPER LIGHTING SOLUTIONS (FORMERLY EATON)  
Product Line: INVUE  
Catalog Number: VWM-E04-LED-E1-SL2-HSS-8030  
Description: VISION WALL MEDIUM LED LUMINAIRE  
(4) LIGHTBARS WITH AccuLED OPTICS - TYPE 2 W/ SPILL LIGHT CONTROL AND HOUSE SIDE SHIELD  
Light Source: (84) 3000K CCT, 80 CRI LEDs  
Ballast/Driver: -

**Summary**

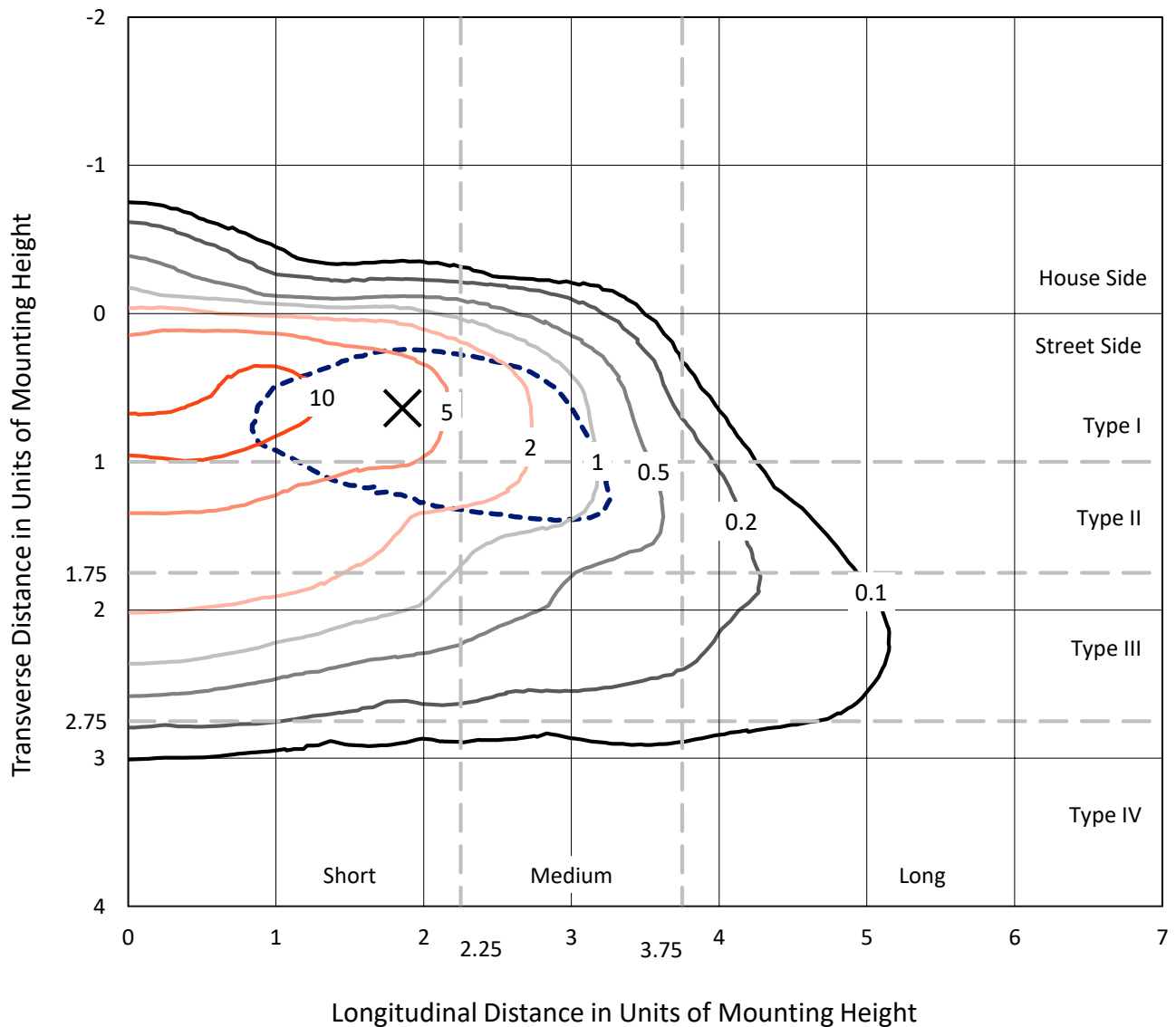
Lumens per Lamp: N/A  
Luminaire Lumens: 6190.1 lumens  
Efficiency: N/A  
Efficacy: 63.7 lumens/watt  
Luminous Opening: Rectangular (W 0.67' x L: 1' x H: 0')  
IES Classification: Type II - Short - Non-Cutoff  
BUG Rating: B0 - U0 - G2  
  
Input Watts (W): 97.2  
Input Voltage (V): NR  
Input Current (Ain): NR  
Voltage Rise (V): NR  
Power Factor: NR  
Total Harmonic Distortion (THDi): NR  
Frequency (hertz): 60  
Stabilization Time: NR  
Operation Time: NR  
Ambient Temperature (°C): NR  
Test Distance: 25 FT



REPORT NUMBER: P149378  
 CATALOG NUMBER: VWM-E04-LED-E1-SL2-HSS-8030

### Iso-Footcandle Lines of Horizontal Illumination

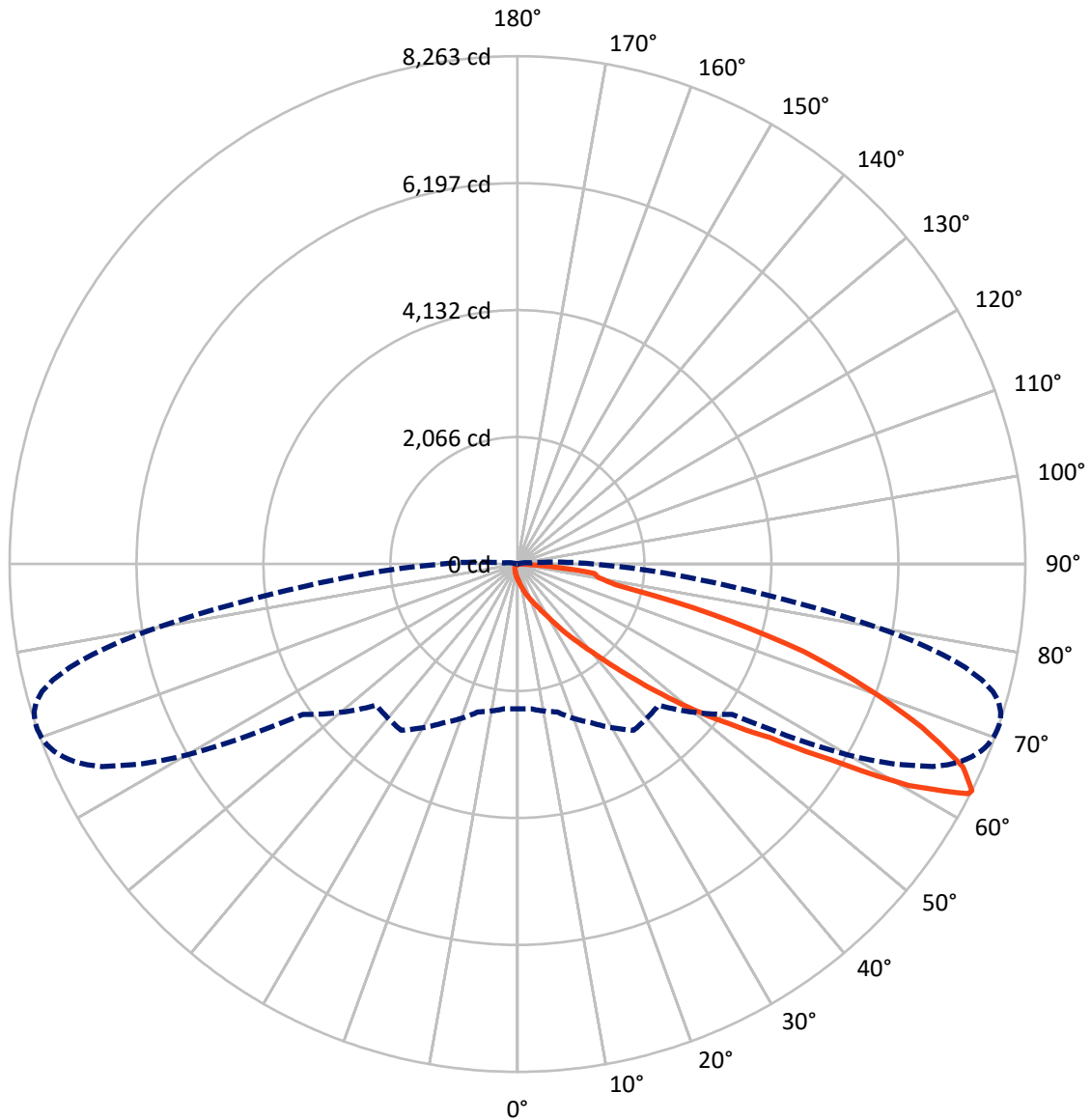
× Max cd  
 - - - 1/2 Max cd



Based on 10 foot mounting height. Maximum calculated value = 13 fc  
 Type II - Short - Non-Cutoff

REPORT NUMBER: P149378  
CATALOG NUMBER: VWM-E04-LED-E1-SL2-HSS-8030

### Luminous Intensity Polar Plot



— Vertical Plane Through 71-Deg Lateral      - - - Horizontal Cone Through 63-Deg Vertical

REPORT NUMBER: P149378

CATALOG NUMBER: VWM-E04-LED-E1-SL2-HSS-8030

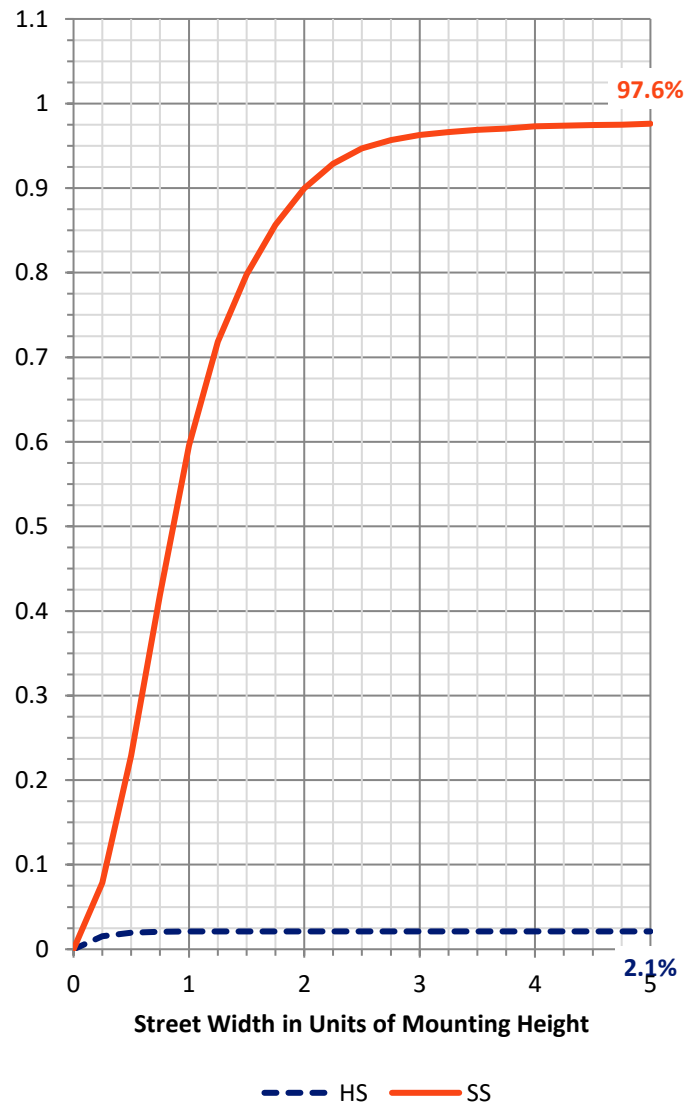
**FLUX DISTRIBUTION:**

		Downward	Upward	Total
<b>House Side</b>	Lumens	131.4	0.0	131.4
	% Fixture	2.1	0.0	2.1
<b>Street Side</b>	Lumens	6058.7	0.0	6058.7
	% Fixture	97.9	0.0	97.9
<b>Total</b>	Lumens	6190.1	0.0	6190.1
	% Fixture	100.0	0.0	100.0

**Coefficient of Utilization**

**ZONAL LUMENS:**

Zone	Lumens	% Fixture
0°-10°	26.2	0.4
10°-20°	101.8	1.6
20°-30°	206.7	3.3
30°-40°	505.1	8.2
40°-50°	1129.6	18.2
50°-60°	1588.3	25.7
60°-70°	1867.7	30.2
70°-80°	674.4	10.9
80°-90°	90.2	1.5
90°-100°	0.0	0.0
100°-110°	0.0	0.0
110°-120°	0.0	0.0
120°-130°	0.0	0.0
130°-140°	0.0	0.0
140°-150°	0.0	0.0
150°-160°	0.0	0.0
160°-170°	0.0	0.0
170°-180°	0.0	0.0
0°-90°	6190.1	100.0
0°-180°	6190.1	100.0



REPORT NUMBER: P149378

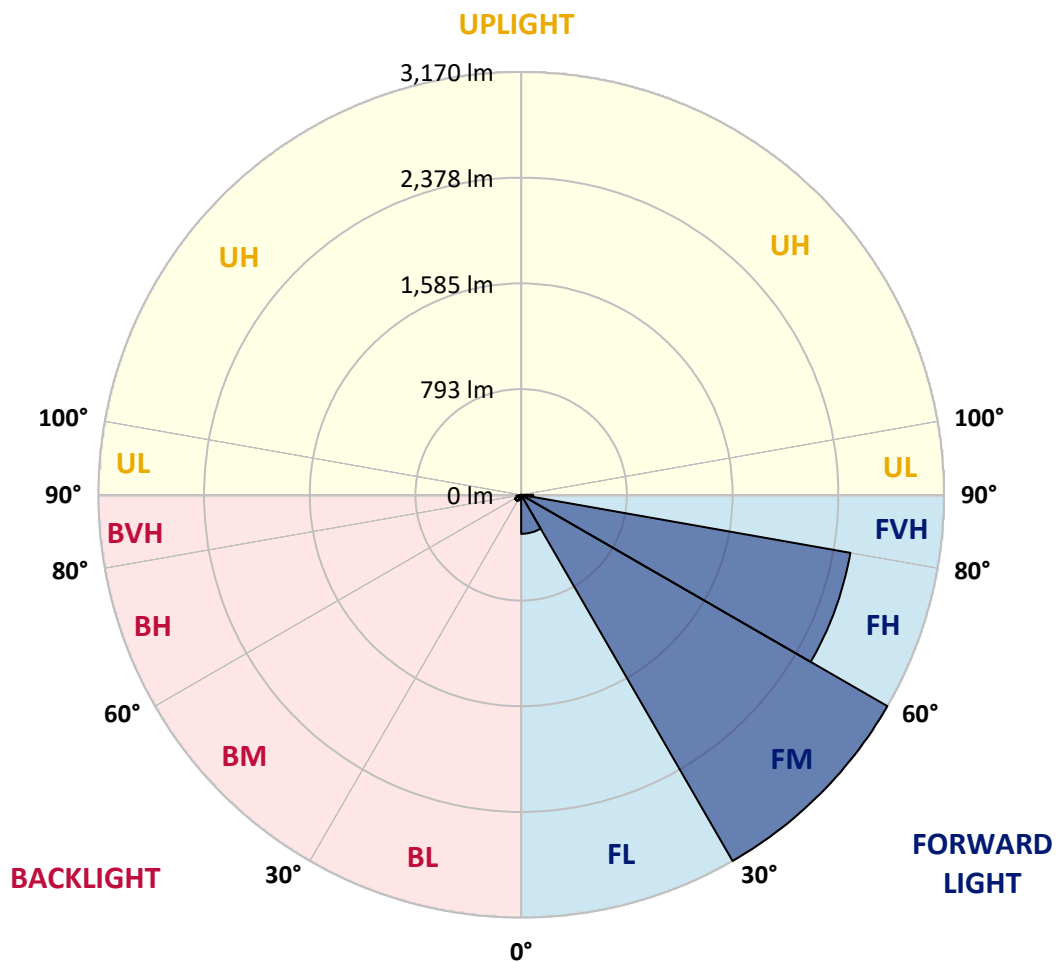
CATALOG NUMBER: VWM-E04-LED-E1-SL2-HSS-8030

**LUMINAIRE CLASSIFICATION SYSTEM LUMEN TABLE AND BUG RATING:**

Zone	Lumens	% Fixture	Zone Rating/Lumen Limit		
			B	U	G
FL (0°-30°)	292.5	4.7			
FM (30°-60°)	3170.0	51.2			
FH (60°-80°)	2506.1	40.5			G2/5000
FVH (80°-90°)	90.0	1.5			G1/100
BL (0°-30°)	42.3	0.7	B0/110		
BM (30°-60°)	53.0	0.9	B0/220		
BH (60°-80°)	36.0	0.6	B0/110		G0/110
BVH (80°-90°)	0.2	0.0			G0/10
UL (90°-100°)	0.0	0.0		U0/0	
UH (100°-180°)	0.0	0.0		U0/0	

**BUG Rating: B0-U0-G2**

Type II Short





REPORT NUMBER: P149378  
 CATALOG NUMBER: VWM-E04-LED-E1-SL2-HSS-8030

**CANDELA DISTRIBUTION (FULL):**

	0°	5°	15°	25°	35°	45°	55°	56°	57°	58°	59°
0°	237.4	237.4	237.4	237.4	237.4	237.4	237.4	237.4	237.4	237.4	237.4
2.5°	310.6	314.0	311.7	306.1	299.3	290.3	282.5	282.5	281.3	278.0	279.1
5°	407.4	408.5	404.0	390.5	378.1	359.0	337.6	335.3	333.1	329.7	328.6
7.5°	501.9	506.4	501.9	487.3	462.5	433.2	399.5	396.1	389.4	389.4	384.9
10°	598.7	598.7	594.2	577.3	554.8	513.1	470.4	464.8	456.9	454.6	447.9
12.5°	667.3	667.3	665.1	656.1	638.1	600.9	549.2	543.5	533.4	530.0	522.1
15°	694.3	694.3	695.4	703.3	704.5	687.6	633.6	629.1	618.9	609.9	606.5
17.5°	711.2	710.1	710.1	721.3	741.6	752.8	718.0	713.5	702.2	697.7	686.4
20°	748.3	746.1	739.3	739.3	758.5	797.9	797.9	796.7	784.3	781.0	775.3
22.5°	803.5	801.2	781.0	764.1	773.1	822.6	868.7	866.5	862.0	857.5	854.1
25°	893.5	885.6	850.7	801.2	793.4	846.2	922.8	928.4	931.8	931.8	934.0
27.5°	1029.7	1019.5	957.6	865.4	830.5	884.5	982.4	993.7	1003.8	1006.0	1016.2
30°	1218.7	1200.7	1111.8	976.8	896.9	940.8	1070.2	1082.6	1097.2	1101.7	1117.4
32.5°	1529.3	1519.2	1433.7	1231.1	1060.1	1051.1	1192.8	1208.6	1227.7	1235.6	1254.7
35°	2001.9	2004.2	1934.4	1752.1	1515.8	1392.0	1412.3	1425.8	1432.5	1456.2	1466.3
37.5°	2322.7	2328.3	2344.0	2272.0	2103.2	1977.2	1818.5	1833.1	1798.3	1801.6	1802.8
40°	2498.2	2516.2	2608.5	2678.3	2664.8	2591.6	2464.5	2472.3	2407.1	2392.4	2321.5
42.5°	2615.2	2638.9	2786.3	3002.4	3112.6	3179.0	3149.8	3146.4	3095.8	3076.6	3017.0
45°	2688.4	2709.8	2895.5	3213.9	3468.2	3661.8	3741.7	3750.7	3707.9	3688.8	3639.3
47.5°	2685.0	2709.8	2909.0	3292.7	3667.4	3976.9	4201.9	4213.2	4239.1	4222.2	4225.6
50°	2536.5	2560.1	2760.4	3158.8	3608.9	4120.9	4532.8	4568.8	4610.4	4638.6	4652.1
52.5°	2356.4	2373.3	2551.1	2929.2	3359.1	4061.3	4728.6	4790.5	4852.4	4905.3	4942.4
55°	2290.0	2309.2	2448.7	2762.7	3158.8	3811.5	4819.8	4910.9	4998.7	5085.3	5156.2
57.5°	2324.9	2342.9	2443.1	2683.9	3039.5	3548.1	4845.6	4987.4	5131.5	5272.1	5411.7
60°	2453.2	2472.3	2557.9	2757.0	3008.0	3396.2	4744.4	4979.5	5219.2	5464.6	5695.3
62.5°	2402.6	2410.4	2536.5	2885.3	3233.0	3266.8	4376.4	4705.0	5070.7	5448.8	5821.3
63°	2354.2	2363.2	2491.5	2850.4	3301.7	3247.7	4262.7	4609.3	4995.3	5402.7	5807.8
65°	2134.7	2135.9	2233.8	2517.3	3225.2	3281.4	3756.3	4087.2	4530.5	5018.9	5531.0
67.5°	1593.5	1585.6	1680.1	1896.2	2532.0	3282.6	3224.0	3409.7	3718.1	4151.3	4610.4
70°	564.9	552.5	705.6	1004.9	1577.7	2685.0	2770.5	2782.9	2868.4	3102.5	3390.6
72.5°	183.4	186.8	225.1	368.0	727.0	1807.3	2508.3	2470.1	2447.6	2446.4	2484.7
75°	73.1	74.3	90.0	163.2	326.3	871.0	2196.6	2218.0	2225.9	2237.1	2249.5
77.5°	34.9	38.3	50.6	91.2	162.0	431.0	1572.1	1753.3	1856.8	1936.7	1985.1
80°	12.4	14.6	28.1	56.3	75.4	198.1	828.2	999.3	1151.2	1347.0	1515.8
82.5°	0.0	0.0	5.6	39.4	41.6	79.9	339.8	398.4	455.8	590.8	758.5
85°	0.0	0.0	0.0	11.3	12.4	13.5	114.8	138.4	155.3	181.2	209.3
87.5°	0.0	0.0	0.0	0.0	0.0	0.0	1.1	3.4	6.8	16.9	25.9
90°	0.0	0.0	0.0	0.0	0.0	0.0	0.0	0.0	0.0	0.0	0.0



REPORT NUMBER: P149378  
 CATALOG NUMBER: VWM-E04-LED-E1-SL2-HSS-8030

**CANDELA DISTRIBUTION (continued):**

	60°	61°	62°	64°	65°	66°	67°	68°	69°	70°	71°
0°	237.4	237.4	237.4	237.4	237.4	237.4	237.4	237.4	237.4	237.4	237.4
2.5°	276.8	275.7	275.7	273.5	272.3	270.1	269.0	265.6	264.5	264.5	264.5
5°	327.5	323.0	320.7	315.1	311.7	310.6	305.0	302.7	299.3	300.5	294.8
7.5°	383.7	375.9	372.5	364.6	362.4	354.5	352.2	346.6	343.2	336.5	334.2
10°	445.6	435.5	429.9	417.5	414.1	408.5	401.7	395.0	389.4	382.6	379.2
12.5°	516.5	507.5	503.0	486.1	478.3	470.4	461.4	452.4	443.4	437.7	429.9
15°	599.8	585.2	580.7	564.9	551.4	541.3	528.9	517.6	510.9	499.6	491.8
17.5°	681.9	667.3	663.9	640.3	625.7	618.9	605.4	590.8	578.4	567.2	554.8
20°	764.1	754.0	745.0	722.5	706.7	695.4	677.4	662.8	652.7	636.9	621.2
22.5°	846.2	836.1	829.4	805.7	791.1	775.3	759.6	743.8	729.2	710.1	692.1
25°	930.6	923.9	920.5	899.1	885.6	871.0	855.2	837.2	819.2	797.9	778.7
27.5°	1018.4	1020.7	1013.9	1009.4	994.8	984.7	959.9	947.5	934.0	908.1	884.5
30°	1129.8	1136.6	1134.3	1137.7	1128.7	1121.9	1102.8	1087.1	1071.3	1046.5	1019.5
32.5°	1270.5	1279.5	1284.0	1296.4	1291.9	1289.6	1284.0	1261.5	1250.2	1207.5	1196.2
35°	1487.7	1483.2	1502.3	1512.4	1507.9	1505.7	1498.9	1486.5	1473.0	1442.7	1414.5
37.5°	1770.1	1774.6	1781.4	1761.1	1747.6	1746.5	1726.2	1713.9	1694.7	1661.0	1627.2
40°	2287.8	2259.6	2228.1	2142.6	2105.5	2084.1	2024.5	2007.6	1974.9	1928.8	1893.9
42.5°	2960.7	2932.6	2838.1	2695.1	2618.6	2512.8	2464.5	2404.8	2358.7	2283.3	2242.8
45°	3629.2	3548.1	3536.9	3370.3	3275.8	3136.3	3049.6	2949.5	2844.8	2745.8	2673.8
47.5°	4192.9	4174.9	4119.8	4018.5	3930.7	3813.7	3702.3	3548.1	3440.1	3299.4	3170.0
50°	4644.2	4643.1	4622.8	4564.3	4491.2	4396.6	4298.7	4168.2	4045.5	3873.4	3734.9
52.5°	4981.8	4999.8	5006.6	4988.5	4960.4	4877.1	4827.6	4718.5	4614.9	4468.7	4319.0
55°	5229.4	5295.8	5329.5	5367.8	5359.9	5330.6	5328.4	5257.5	5210.2	5094.3	4988.5
57.5°	5535.5	5644.6	5749.3	5934.9	5941.7	6007.0	6040.7	6074.5	6083.5	6037.3	6002.5
60°	5924.8	6147.6	6345.7	6733.9	6835.2	6995.0	7098.5	7211.1	7306.7	7314.6	7312.3
62.5°	6199.4	6542.6	6862.2	7438.4	7635.3	7819.9	7958.3	8067.4	8133.8	8201.3	8232.9
63°	6207.3	6583.1	6923.0	7517.1	7724.2	7899.8	8031.4	8132.7	8202.5	8243.0	8263.2
65°	6017.1	6472.8	6878.0	7469.9	7664.6	7841.2	7909.9	7976.3	8010.0	8025.8	7966.1
67.5°	5100.0	5545.6	6018.2	6679.9	6846.5	7058.0	7114.3	7148.0	7163.8	7160.4	7109.8
70°	3813.7	4187.3	4712.8	5469.1	5689.6	5896.7	6025.0	6080.1	6098.1	6092.5	6017.1
72.5°	2662.5	2881.9	3315.2	4156.9	4457.4	4723.0	4881.6	4963.8	4980.7	4946.9	4877.1
75°	2236.0	2247.3	2345.2	2805.4	3086.8	3370.3	3549.3	3601.0	3567.3	3464.9	3287.1
77.5°	1996.3	2021.1	2021.1	2089.7	2144.9	2223.6	2240.5	2114.5	1968.2	1779.1	1626.1
80°	1674.5	1761.1	1821.9	1872.5	1878.2	1862.4	1820.8	1749.9	1637.3	1493.3	1333.5
82.5°	1017.3	1188.3	1258.1	1519.2	1647.5	1734.1	1727.4	1632.8	1547.3	1397.6	1261.5
85°	256.6	276.8	300.5	390.5	437.7	534.5	595.3	623.4	633.6	581.8	526.7
87.5°	24.8	16.9	28.1	21.4	30.4	22.5	30.4	28.1	34.9	37.1	40.5
90°	0.0	0.0	0.0	0.0	0.0	0.0	0.0	0.0	0.0	0.0	0.0





REPORT NUMBER: P149378

CATALOG NUMBER: VWM-E04-LED-E1-SL2-HSS-8030

**CANDELA DISTRIBUTION (continued):**

	72°	73°	74°	75°	76°	77°	78°	79°	80°	81°	82°
0°	237.4	237.4	237.4	237.4	237.4	237.4	237.4	237.4	237.4	237.4	237.4
2.5°	262.2	261.1	259.9	258.8	257.7	256.6	254.3	254.3	252.1	250.9	249.8
5°	291.5	289.2	288.1	285.8	282.5	280.2	276.8	272.3	269.0	267.8	265.6
7.5°	328.6	323.0	320.7	317.3	312.8	306.1	301.6	298.2	292.6	289.2	282.5
10°	370.2	364.6	357.9	351.1	344.3	336.5	330.8	326.3	317.3	312.8	305.0
12.5°	423.1	413.0	405.1	396.1	387.1	378.1	371.4	357.9	350.0	339.8	333.1
15°	477.1	468.1	459.1	447.9	434.4	419.7	413.0	400.6	390.5	374.7	365.7
17.5°	542.4	525.5	512.0	498.5	486.1	472.6	459.1	440.0	425.4	411.9	393.9
20°	606.5	586.3	571.7	553.7	535.7	514.3	498.5	485.0	464.8	446.8	427.6
22.5°	675.2	654.9	631.3	613.3	588.5	571.7	550.3	527.8	507.5	483.9	460.3
25°	758.5	737.1	710.1	686.4	658.3	634.7	608.8	582.9	558.2	531.2	500.8
27.5°	860.9	838.4	809.1	781.0	743.8	714.6	689.8	654.9	623.4	589.7	554.8
30°	990.3	965.5	929.5	889.0	851.9	819.2	784.3	738.2	703.3	662.8	617.8
32.5°	1159.1	1129.8	1081.4	1043.2	997.0	954.3	905.9	859.7	810.2	757.3	705.6
35°	1371.8	1344.8	1288.5	1232.2	1181.6	1130.9	1070.2	1017.3	947.5	883.4	817.0
37.5°	1592.3	1543.9	1492.2	1431.4	1368.4	1307.6	1233.4	1160.2	1080.3	1010.5	927.3
40°	1844.4	1785.9	1743.1	1677.9	1589.0	1502.3	1433.7	1342.5	1242.4	1149.0	1051.1
42.5°	2189.9	2124.6	2048.1	1949.1	1884.9	1783.6	1694.7	1586.7	1455.0	1350.4	1232.2
45°	2589.4	2500.5	2426.2	2330.5	2252.9	2126.9	2023.3	1879.3	1747.6	1610.3	1466.3
47.5°	3045.1	2934.8	2826.8	2732.3	2608.5	2484.7	2353.0	2200.0	2031.2	1880.4	1709.4
50°	3568.4	3412.0	3262.3	3140.8	2970.8	2827.9	2685.0	2512.8	2326.0	2152.7	1958.1
52.5°	4150.2	3969.0	3771.0	3584.1	3387.2	3203.8	3031.6	2833.6	2625.4	2413.8	2196.6
55°	4852.4	4716.2	4483.3	4245.8	3982.5	3737.2	3515.5	3270.2	3017.0	2739.0	2510.6
57.5°	5951.8	5885.4	5690.7	5453.3	5110.1	4811.9	4436.0	4135.6	3768.7	3386.1	3091.3
60°	7441.7	7359.6	7250.4	7058.0	6785.7	6380.6	5966.5	5499.4	4941.3	4411.3	3908.2
62.5°	8236.2	8207.0	8118.1	7985.3	7731.0	7411.4	6993.9	6480.7	5850.5	5206.9	4565.4
63°	8259.9	8222.7	8146.2	8011.2	7787.2	7477.8	7068.1	6569.6	5952.9	5296.9	4642.0
65°	7940.3	7925.6	7848.0	7700.6	7547.5	7311.2	6993.9	6565.1	6047.5	5427.4	4775.9
67.5°	7042.3	6998.4	6879.1	6834.1	6727.2	6562.9	6320.9	6026.1	5655.9	5168.6	4605.9
70°	5956.3	5891.1	5741.4	5661.5	5531.0	5427.4	5280.0	5069.6	4841.1	4501.3	4081.5
72.5°	4805.1	4670.1	4532.8	4324.6	4142.3	3957.8	3794.6	3646.0	3395.1	3257.8	2939.3
75°	3120.5	2875.2	2640.0	2324.9	2041.3	1790.4	1546.2	1422.4	1164.7	1060.1	910.4
77.5°	1480.9	1343.6	1159.1	1016.2	833.9	680.8	555.9	417.5	327.5	256.6	195.8
80°	1195.1	1079.2	967.8	838.4	701.1	559.3	428.7	320.7	227.3	157.5	111.4
82.5°	1065.7	939.6	802.4	713.5	620.1	507.5	416.4	339.8	250.9	183.4	124.9
85°	414.1	348.8	269.0	219.4	171.0	140.7	127.2	87.8	68.6	54.0	41.6
87.5°	36.0	29.3	23.6	15.8	16.9	9.0	10.1	6.8	5.6	5.6	4.5
90°	0.0	0.0	0.0	0.0	0.0	0.0	0.0	0.0	0.0	0.0	0.0



REPORT NUMBER: P149378  
 CATALOG NUMBER: VWM-E04-LED-E1-SL2-HSS-8030

**CANDELA DISTRIBUTION (continued):**

	83°	84°	85°	86°	87°	88°	89°	90°	95°	105°	115°
0°	237.4	237.4	237.4	237.4	237.4	237.4	237.4	237.4	237.4	237.4	237.4
2.5°	248.7	247.6	246.4	244.2	244.2	241.9	240.8	239.7	234.1	221.7	211.6
5°	261.1	258.8	256.6	253.2	250.9	247.6	245.3	241.9	229.6	205.9	185.7
7.5°	279.1	274.6	271.2	264.5	261.1	256.6	253.2	247.6	227.3	191.3	163.2
10°	300.5	292.6	287.0	279.1	272.3	266.7	261.1	253.2	225.1	175.6	142.9
12.5°	326.3	317.3	306.1	297.1	288.1	280.2	272.3	262.2	221.7	162.0	127.2
15°	352.2	338.7	330.8	318.5	306.1	294.8	283.6	274.6	222.8	147.4	113.7
17.5°	381.5	368.0	351.1	337.6	324.1	309.5	296.0	278.0	217.2	136.2	103.5
20°	409.6	390.5	374.7	357.9	338.7	320.7	303.8	288.1	212.7	124.9	94.5
22.5°	440.0	417.5	397.2	375.9	352.2	332.0	311.7	291.5	204.8	114.8	86.6
25°	477.1	451.3	422.0	396.1	371.4	346.6	320.7	296.0	196.9	105.8	81.0
27.5°	522.1	488.4	459.1	426.5	391.6	360.1	332.0	305.0	189.1	99.0	75.4
30°	579.5	540.2	498.5	456.9	419.7	383.7	344.3	310.6	181.2	92.3	69.8
32.5°	656.1	606.5	555.9	507.5	458.0	411.9	370.2	326.3	176.7	86.6	64.1
35°	757.3	693.2	631.3	570.5	510.9	454.6	400.6	351.1	176.7	79.9	57.4
37.5°	853.0	778.7	699.9	624.6	553.7	488.4	424.2	364.6	167.7	74.3	51.8
40°	956.5	867.6	775.3	686.4	600.9	519.9	446.8	378.1	159.8	67.5	46.1
42.5°	1115.2	1002.7	882.3	778.7	676.3	576.2	485.0	404.0	149.7	60.8	40.5
45°	1323.4	1180.5	1038.7	912.6	782.1	659.4	551.4	451.3	147.4	55.1	34.9
47.5°	1546.2	1377.4	1210.8	1049.9	896.9	754.0	624.6	504.1	147.4	49.5	30.4
50°	1767.9	1556.3	1378.5	1191.7	1019.5	850.7	696.6	559.3	148.5	45.0	24.8
52.5°	1968.2	1742.0	1542.8	1326.8	1136.6	940.8	773.1	613.3	146.3	39.4	20.3
55°	2246.1	1980.6	1749.9	1511.3	1288.5	1067.9	877.8	694.3	147.4	34.9	16.9
57.5°	2758.2	2446.4	2168.5	1855.7	1599.1	1314.4	1083.7	860.9	160.9	29.3	12.4
60°	3493.0	3087.9	2697.4	2315.9	1989.6	1650.8	1351.5	1089.3	189.1	23.6	9.0
62.5°	3987.0	3457.0	2991.1	2570.2	2191.0	1836.5	1510.2	1212.0	208.2	19.1	5.6
63°	4037.7	3489.6	3021.5	2587.1	2200.0	1845.5	1516.9	1221.0	209.3	18.0	5.6
65°	4133.3	3545.9	3038.4	2590.5	2191.0	1833.1	1512.4	1219.8	211.6	14.6	4.5
67.5°	4024.1	3459.2	2940.5	2493.7	2112.2	1760.0	1456.2	1174.8	210.4	10.1	3.4
70°	3598.8	3130.6	2674.9	2258.5	1911.9	1593.5	1325.6	1071.3	193.6	6.8	2.3
72.5°	2642.3	2323.8	1970.4	1670.0	1440.4	1196.2	1020.7	804.6	149.7	4.5	1.1
75°	783.2	713.5	599.8	528.9	467.0	386.0	343.2	267.8	76.5	2.3	0.0
77.5°	156.4	141.8	127.2	115.9	109.2	93.4	88.9	73.1	31.5	1.1	0.0
80°	82.1	67.5	57.4	50.6	43.9	36.0	30.4	24.8	5.6	0.0	0.0
82.5°	78.8	52.9	38.3	31.5	27.0	21.4	16.9	12.4	3.4	0.0	0.0
85°	29.3	22.5	16.9	13.5	11.3	10.1	7.9	6.8	0.0	0.0	0.0
87.5°	4.5	3.4	3.4	2.3	2.3	1.1	1.1	1.1	0.0	0.0	0.0
90°	0.0	0.0	0.0	0.0	0.0	0.0	0.0	0.0	0.0	0.0	0.0



REPORT NUMBER: P149378

CATALOG NUMBER: VWM-E04-LED-E1-SL2-HSS-8030

**CANDELA DISTRIBUTION (continued):**

	125°	135°	145°	155°	165°	175°	180°
0°	237.4	237.4	237.4	237.4	237.4	237.4	237.4
2.5°	201.4	192.4	187.9	182.3	182.3	181.2	183.4
5°	167.7	155.3	146.3	139.5	140.7	137.3	138.4
7.5°	141.8	129.4	121.5	117.0	115.9	114.8	114.8
10°	122.7	111.4	104.7	101.3	100.2	100.2	100.2
12.5°	109.2	97.9	92.3	90.0	90.0	88.9	88.9
15°	97.9	88.9	83.3	81.0	81.0	79.9	81.0
17.5°	88.9	79.9	75.4	73.1	73.1	72.0	72.0
20°	81.0	73.1	68.6	65.3	65.3	64.1	65.3
22.5°	74.3	66.4	60.8	58.5	57.4	56.3	57.4
25°	67.5	59.6	54.0	50.6	49.5	49.5	48.4
27.5°	61.9	54.0	47.3	43.9	42.8	42.8	41.6
30°	56.3	47.3	40.5	37.1	36.0	36.0	36.0
32.5°	50.6	40.5	34.9	31.5	30.4	30.4	30.4
35°	45.0	34.9	29.3	25.9	24.8	24.8	24.8
37.5°	38.3	29.3	22.5	20.3	19.1	18.0	18.0
40°	32.6	22.5	16.9	14.6	12.4	12.4	12.4
42.5°	27.0	18.0	12.4	9.0	7.9	6.8	7.9
45°	22.5	13.5	7.9	4.5	3.4	3.4	3.4
47.5°	18.0	9.0	3.4	1.1	1.1	1.1	1.1
50°	13.5	5.6	1.1	0.0	0.0	1.1	1.1
52.5°	10.1	3.4	0.0	0.0	0.0	0.0	0.0
55°	5.6	1.1	0.0	0.0	0.0	0.0	0.0
57.5°	3.4	0.0	0.0	0.0	0.0	0.0	0.0
60°	2.3	0.0	0.0	0.0	0.0	0.0	0.0
62.5°	1.1	0.0	0.0	0.0	0.0	0.0	0.0
63°	1.1	0.0	0.0	0.0	0.0	0.0	0.0
65°	1.1	0.0	0.0	0.0	0.0	0.0	0.0
67.5°	0.0	0.0	0.0	0.0	0.0	0.0	0.0
70°	0.0	0.0	0.0	0.0	0.0	0.0	0.0
72.5°	0.0	0.0	0.0	0.0	0.0	0.0	0.0
75°	0.0	0.0	0.0	0.0	0.0	0.0	0.0
77.5°	0.0	0.0	0.0	0.0	0.0	0.0	0.0
80°	0.0	0.0	0.0	0.0	0.0	0.0	0.0
82.5°	0.0	0.0	0.0	0.0	0.0	0.0	0.0
85°	0.0	0.0	0.0	0.0	0.0	0.0	0.0
87.5°	0.0	0.0	0.0	0.0	0.0	0.0	0.0
90°	0.0	0.0	0.0	0.0	0.0	0.0	0.0

(END OF REPORT)